



**India Meteorological Department
(Ministry of Earth Sciences)**

HOURLY UPDATE ON SEVERE CYCLONIC STORM “DANA”

BULLETIN NO. 1

DATE: 24-10-2024

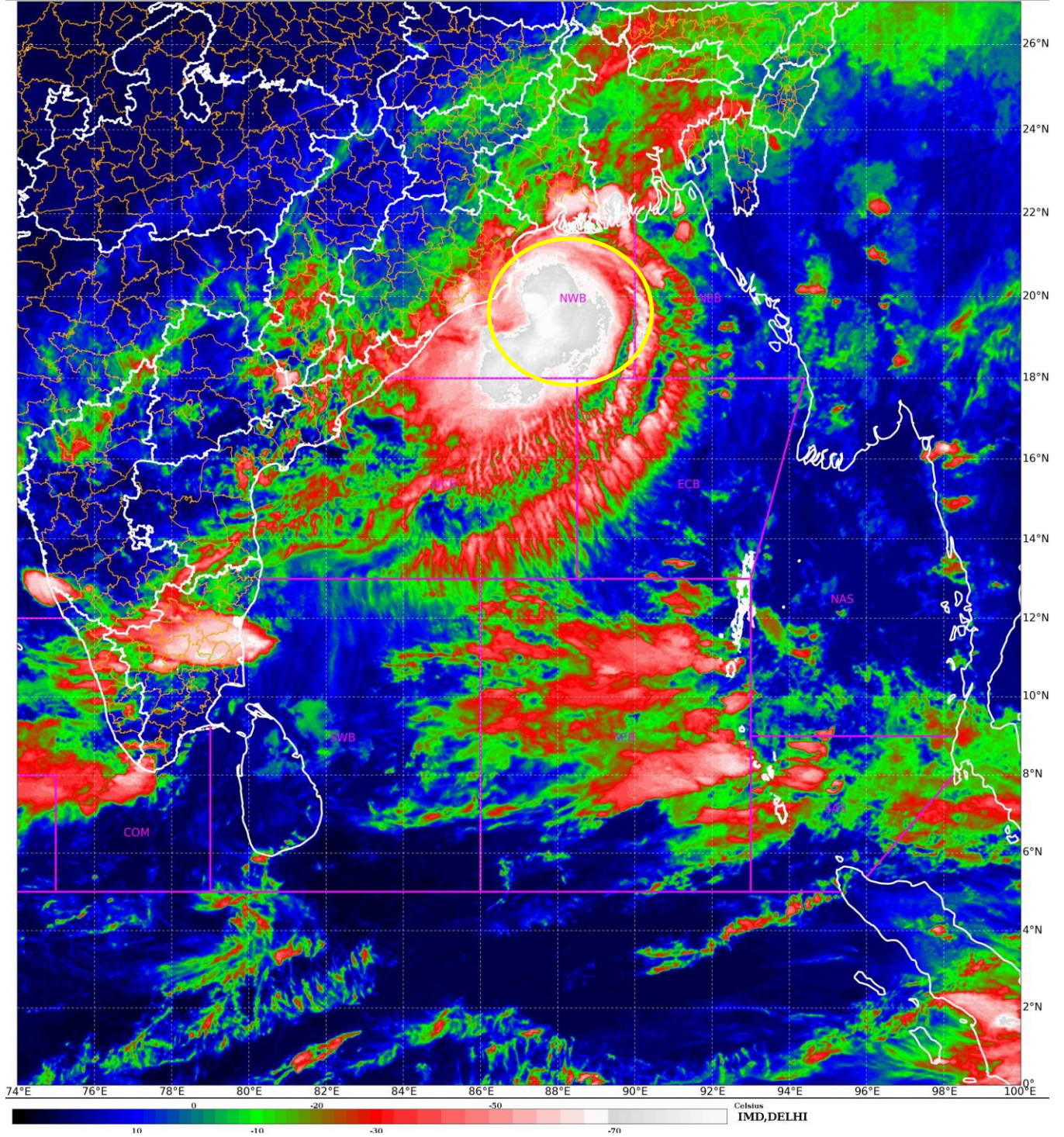
TIME OF ISSUE 1930 HRS IST

DATE/TIME (IST) OF OBSERVATION	BASED ON 24-10-2024 (1730 HRS IST)
LOCATION LATITUDE/LONGITUDE	THE SEVERE CYCLONIC STORM “DANA” (PRONOUNCED AS DANA) OVER NORTHWEST BAY OF BENGAL MOVED NORTH-NORTHWESTWARDS WITH A SPEED OF 13 KMPH DURING PAST 6 HOURS AND LAY CENTRED AT 1730 HRS IST OF TODAY, THE 24TH OCTOBER, OVER THE SAME REGION, NEAR LATITUDE 19.8° N AND LONGITUDE 87.5°E, ABOUT 100 KM EAST-SOUTHEAST OF PARADIP (ODISHA), 130 KM SOUTH-SOUTHEAST OF DHAMARA (ODISHA) AND 210 KM SOUTH-SOUTHWEST OF SAGAR ISLAND (WEST BENGAL).
CURRENT INTENSITY WIND SPEED	SEVERE CYCLONIC STORM 105-115 KMPH GUSTING TO 125 KMPH
FORECAST	IT IS VERY LIKELY TO MOVE NORTH-NORTHWESTWARDS AND CROSS NORTH ODISHA AND WEST BENGAL COASTS BETWEEN PURI AND SAGAR ISLAND CLOSE TO BHITARKANIKA AND DHAMARA (ODISHA) DURING MID-NIGHT OF 24TH TO MORNING OF 25TH OCTOBER, 2024 AS A SEVERE CYCLONIC STORM WITH A WIND SPEED OF 100-110 KMPH GUSTING 120 KMPH.
OBSERVED RAINFALL FROM 0830 HRS IST TO 1530 HRS IST (0300-1200 UTC) OF 24 TH OCT. (mm)	BHUBANESWAR-11.2, BALASORE-7.8, CHANDBALI-25.6, PARADIP-26.8 HALDIA-23.0, DIGHA-19.0
OBSERVED WINDSPEED AT 1730 HRS IST (1200 UTC) OF 05 TH DEC. (KNOTS)	PARADIP- 14KT/ NNWLY, BHUBANESWAR-10 KT/ NNWLY, BALESWAR-08 KT/NNELY, CANNING & DUMDUM 08 KT/ELY

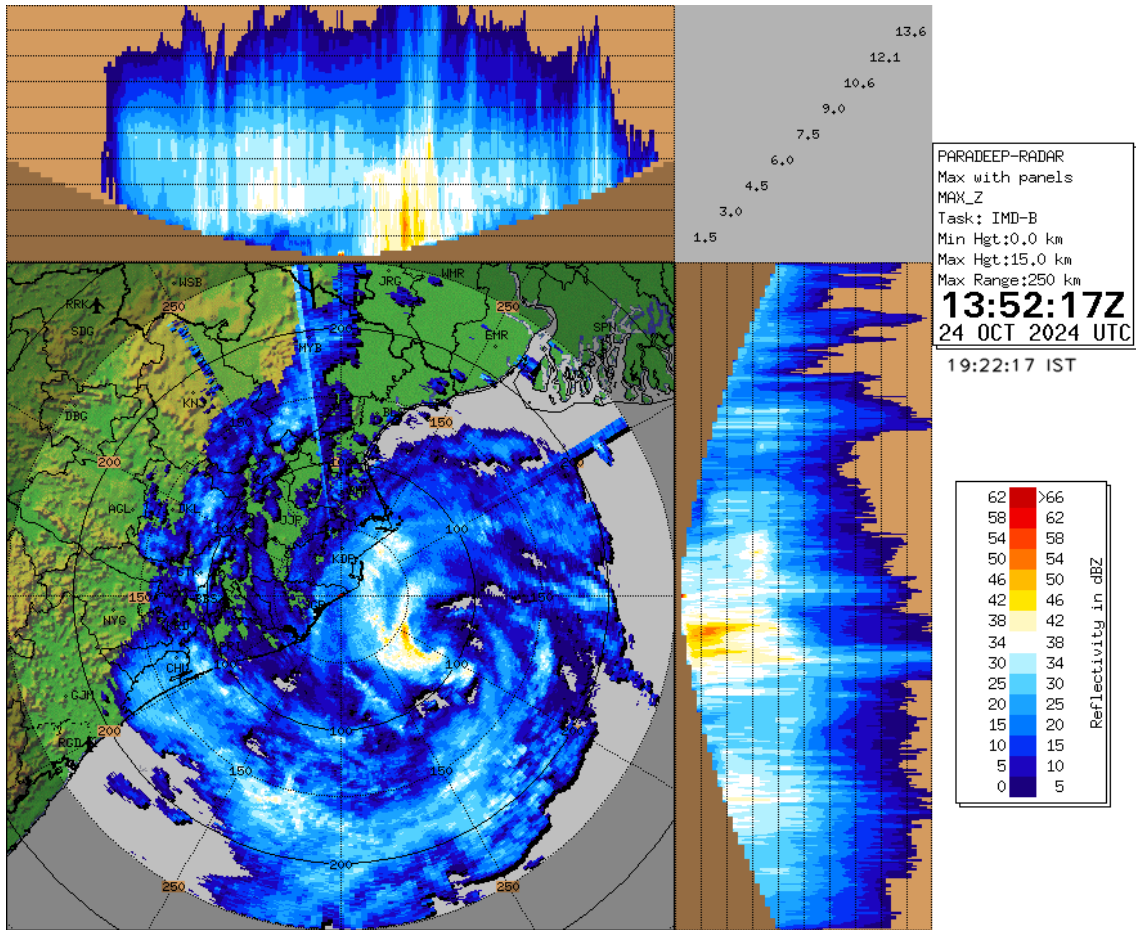
SATELLITE IMAGERY

SAT : INSAT-3DR IMG
IMG_TIR1_TEMP 10.8 um
LIC Mercator

24-10-2024/(1315 to 1342) GMT
24-10-2024/(1845 to 1912) IST



RADAR OBSERVATIONS (MAX_Z) OF DWR PARADIP



RADAR OBSERVATIONS (MAX_Z) OF DWR GOPALPUR

